



# Samsung Knox

Product Introductions



# Knox Manage

# Powerful, yet flexible cross-platform EMM solution optimized for Samsung



## SAMSUNG Knox Manage

Android Enterprise mgmt.  
Including advanced features:

- Work Profile
- Full device
- Dedicated device



### Advanced Location Tracking

- Monitor device location periodically
- Location detection using GPS, Wi-Fi, and mobile network

### Remote Support

- Access devices remotely for troubleshooting and maintenance

### Advanced Kiosk Wizard

- Lock the device to a specific app through kiosk mode.
- Create diverse kiosks using drag and drop components

### Event-based Policy Enforcement

- Apply different policy sets based on time, when a specific app is running, and more.

Easy to Use and Best Support for Knox Features and Solutions!

# Why Knox Manage

Simplify the way you remotely manage your Samsung mobile fleet and empower your workforce to achieve more, in office or in field



## Intuitive User Experience

Simple and straightforward user experience maximizes the productivity of your IT Admins



## Fit for Frontline

Powerful management tools unleash your field devices to do more



## Trusted and Market Proven

Industry-recognized and tested for excellence



## Empowered by Samsung

In sync with other Samsung services to maximize operational efficiency

# Painless Onboarding with Getting Started Wizard

IT admins can easily perform initial setup by following a step-by-step guide

①

Set Group & User



User Registration

- Add users and assign them to groups

②

Set Profile



Policy & App Push

- Set configurations and IT policies, such as Wi-Fi settings, blocking camera, blocklisting apps
- Push in-house or public apps

③

Deploy Profile



Send Invite

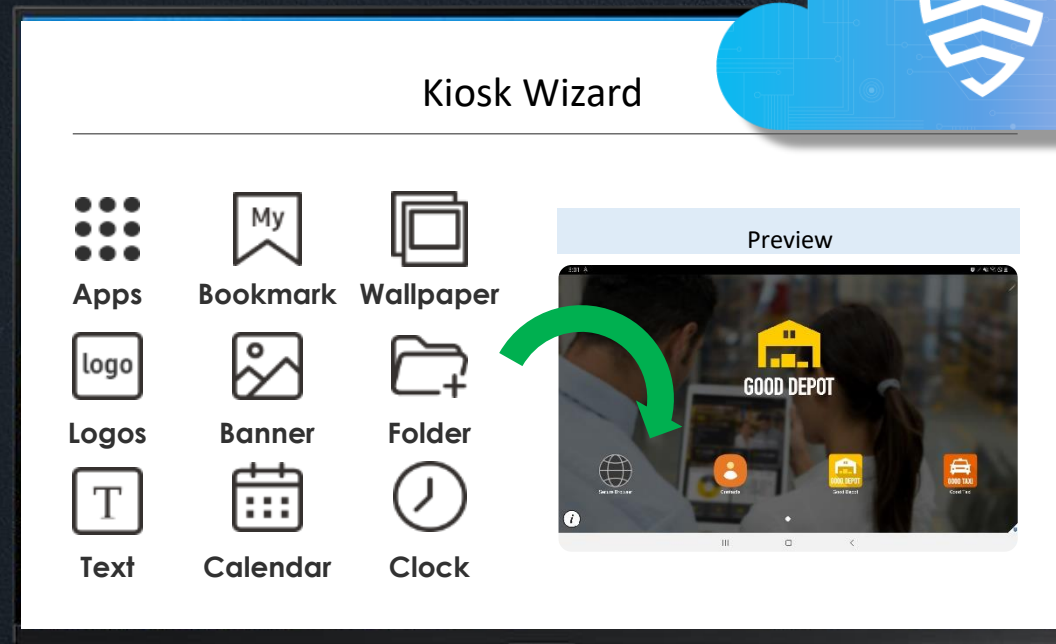
- Send installation guide to users via SMS or Email
- Unnecessary if using KME

\*Knox Mobile Enrollment

# Turn Devices into Purpose-Built Appliances with Ease

Kiosk Wizard enables IT admins to easily and quickly build their own Kiosk without an additional kiosk launcher

Drag & drop and quick configurations



Generate an APK file and install

Once installed, the device works as a :

- Single-app kiosk, or
- Multi-app kiosk

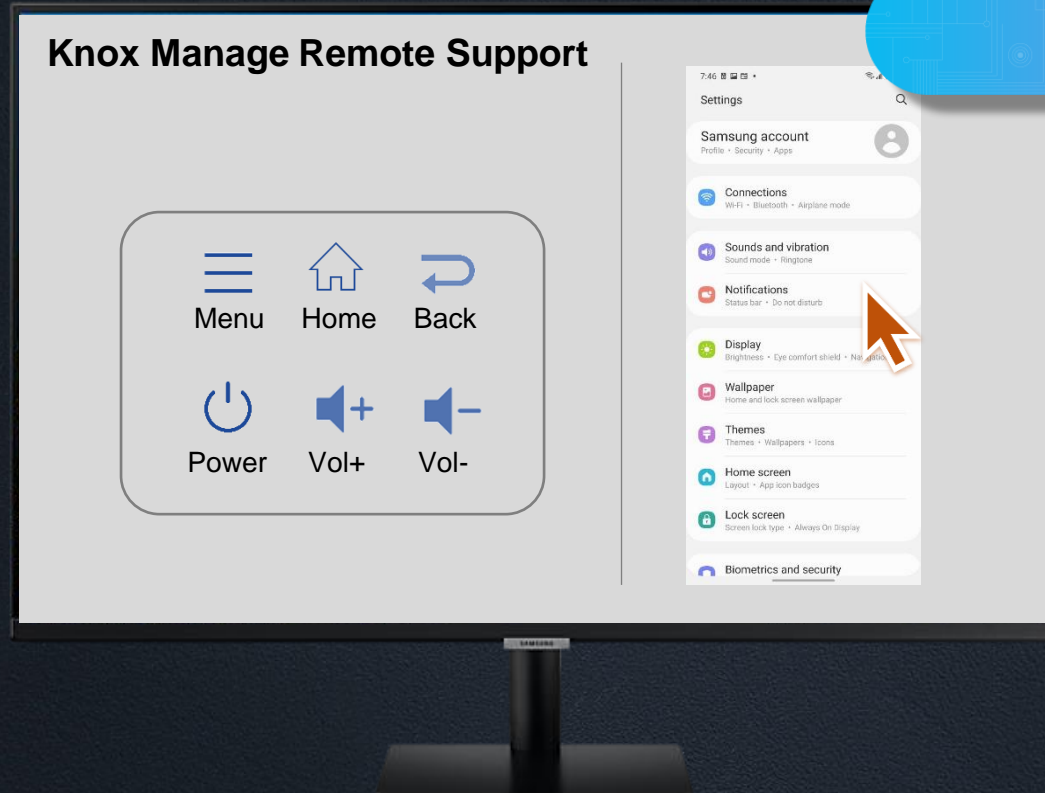


Menu items:  
wallpaper, orientation & grid, allowlisted app settings, device settings, margin color, screen composition, icon size, screen lock, icon text, page rotation, and etc.

# Remotely Access Your Employee's Device to Troubleshoot

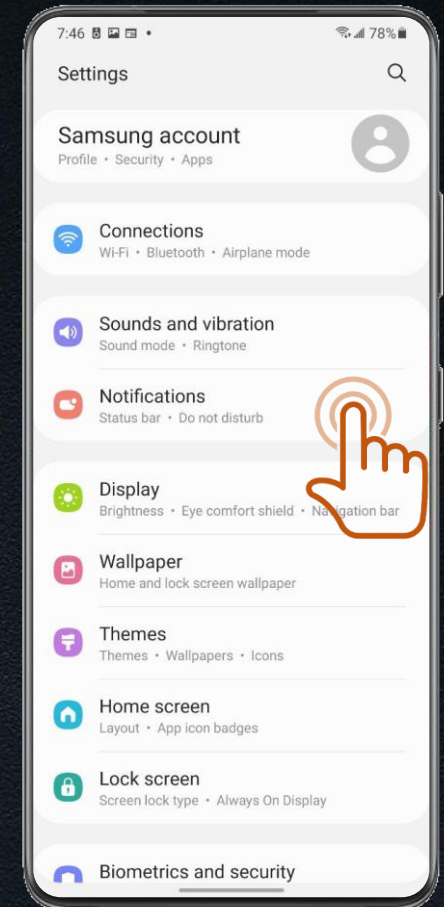
Remote Support allows hands-on troubleshooting for any devices out in the field

No need for separate download, installation, integration, or separate license !



Direct access to device  
from a remote location  
with advanced features

- View in full-screen mode
- Rotate device screen
- Capture screen
- Record screen
- Transfer files

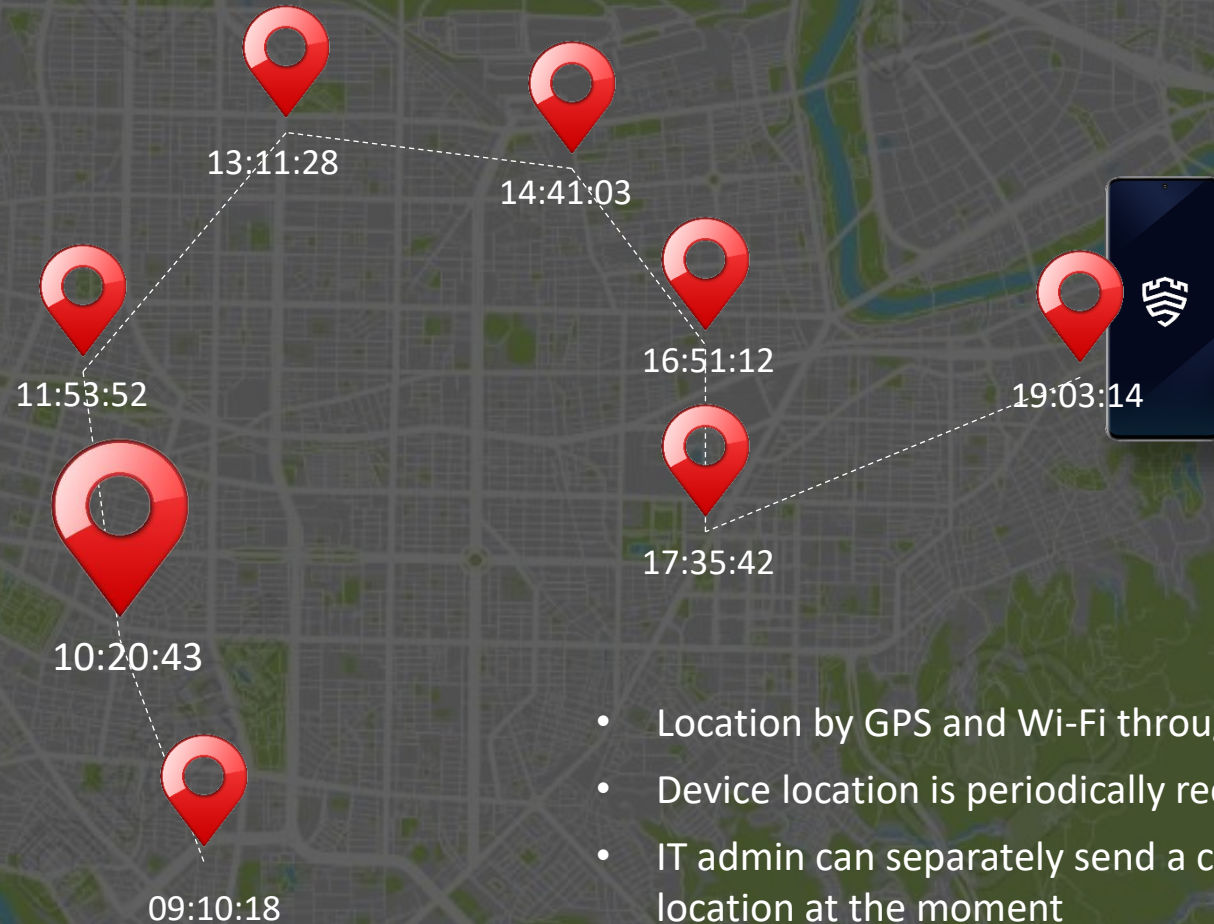


# Track Location of Your Assets Periodically

Device location data can be periodically recorded for tight workflow and asset management

## Date and Time

- 2021. 1. 27 09:10:18
- 2021. 1. 27 10:20:43
- 2021. 1. 27 11:53:52
- 2021. 1. 27 13:11:28
- 2021. 1. 27 14:41:03
- 2021. 1. 27 16:51:12
- 2021. 1. 27 17:35:42
- 2021. 1. 27 19:03:14



- Location by GPS and Wi-Fi through FLP<sup>1</sup>
- Device location is periodically recorded
- IT admin can separately send a command to pull device location at the moment

\* End user consent is required to gather data



# Turn Devices into Kiosk with Multiple Options

Allows users to run only a single app or a group of apps, or a browser with specific URLs only

## Multi App Kiosk

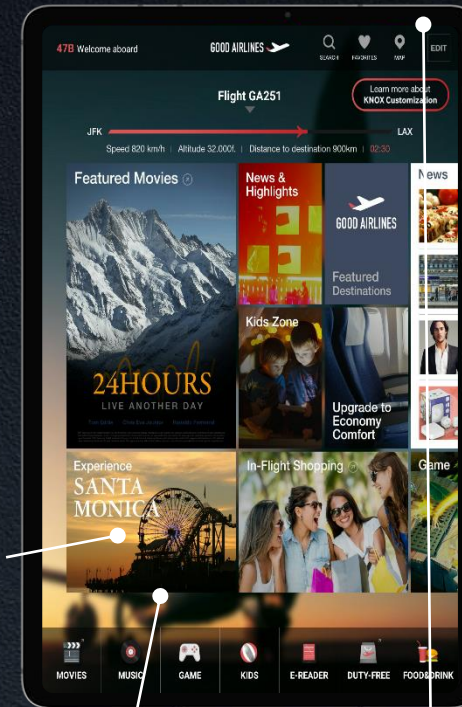


Press to exit Kiosk with a password (online+offline)

Kiosk launcher

Apps that IT admin has allowed users to use

## Single App Kiosk



Only runs a single app

Locked down to a single app

Configure what settings to show

## Kiosk Browser



Browser only allowing predefined URLs